

Computer-related Operations

Table of Contents

What You Can Do with a Connected Computer	2
Connecting to a Computer: Which Terminal Should I Use?.....	5
Connecting a Computer to the Instrument	6
Playing Back Songs (MIDI, Audio) on a Computer with the Instrument ..	8
Recording Your Keyboard Performance as MIDI Data to a Computer.....	9
Recording Your Keyboard Performance as Audio Data to a Computer.	10
Transferring data files Including Song Files, Style Files and Backup Files	11
Transferring files using Musicsoft Downloader.....	13
Installing Musicsoft Downloader.....	13
Transferring MIDI files from the Computer to the Instrument	14
Transferring Song/Style data from the Instrument to the Computer	16
Transferring files with a Computer using Explorer, Finder, etc.	18
Playing Back MIDI Files including Songs Transferred from a Computer	21
Target Models and Functions.....	23

NOTE

- This manual applies to models released on January 2012 or later.

What You Can Do with a Connected Computer

Most all digital musical instruments are compatible with MIDI (Musical Instrument Digital Interface). With this technology, the instrument can communicate with a connected computer by transmitting/receiving MIDI data, including keyboard performance information and Song playback data.

Some models can also transmit audio data, although compatible data differs depending on the particular instrument. Refer to the "Data formats compatible for transfer" column in "[Target Models and Functions](#)" or the Owner's Manual of your instrument.

NOTE

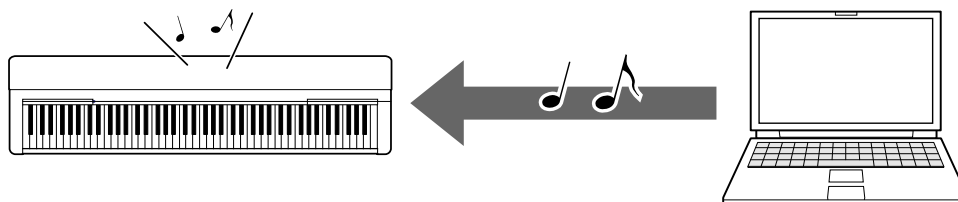
- For details about MIDI, refer to "MIDI Basics" on the following web site:
<https://download.yamaha.com/>

After selecting your country and clicking on "Manual Library" from the "Support" page, select the desired Language, and then enter "MIDI Basics" into the search box.

Playing Back Songs (MIDI, Audio) on a Computer with the Instrument

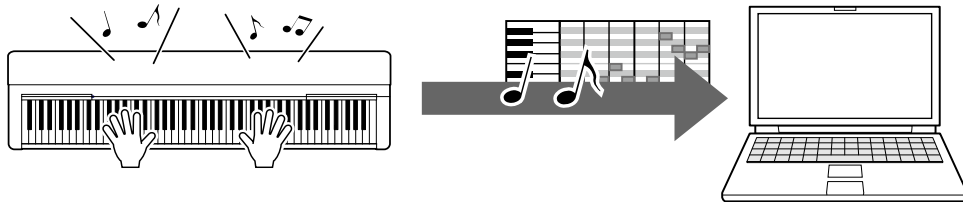
Playing back MIDI files: You can play back MIDI Song files on a computer using the Voice sounds of the instrument with MIDI file playback apps.

Playing back Audio files: You can play back audio song files through the built-in speakers of this instrument with audio playback apps.



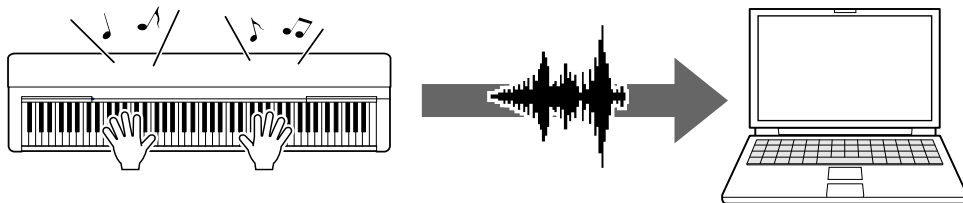
Recording Your Keyboard Performance as MIDI Data to a Computer

Your keyboard performance can be recorded as MIDI events to music software on a computer. Depending on the application, the recorded data can be edited in various ways, and even be converted to notation.



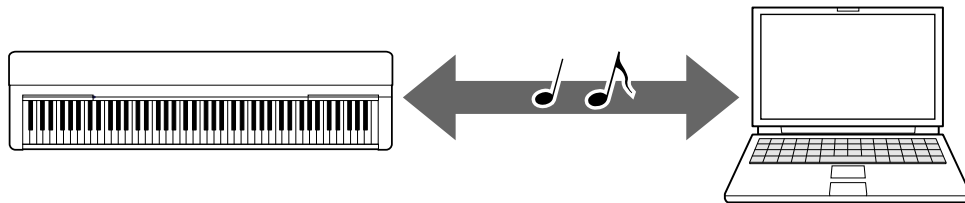
Recording Your Keyboard Performance as Audio Data to a Computer

Your keyboard performance can be recorded as audio data to a computer with a DAW (Digital Audio Workstation) app or hardware. Depending on the particular application, the recorded data can be edited in various ways.



Transferring data files Including Song Files, Style Files and Backup File

Depending on the instrument, User Song data you've recorded can be transferred to a computer and saved as a file. Also, Song data (MIDI files) obtained via the Internet can be transferred and stored to the instrument, for future listening or keyboard practice. For information on the types of files (data) that can be transferred and the file transfer method for each instrument, refer to "[Target Models and Functions](#)." or the Owner's Manual of your instrument.



Connecting to a Computer: Which Terminal Should I Use?

Electronic musical instruments have several external connection terminals, and one of the most convenient and easy to use for connection to a computer is the USB TO HOST terminal.

USB TO HOST terminal (Type B):



Use a USB cable with a plug that matches the terminal shape of your computer and instrument. For details, refer to "[System requirements and setup](#)" in "Connecting a Computer to the Instrument."

The data that can be handled differs depending on the instrument you are using. Refer to the "Data formats compatible for transfer" column in "[Target Models and Functions](#)" or the Owner's Manual of your instrument.

Precautions when using the USB TO HOST terminal

When connecting the computer to the USB TO HOST terminal, make sure to observe the following points to avoid freezing the computer and corrupting or losing the data.

NOTICE

- Use an USB cable of less than 3 meters. USB 3.0 cables cannot be used.
- Execute the following before turning the power to the instrument on/off or plugging/unplugging the USB cable to/from the [USB TO HOST] terminal.
 - Quit any open application software on the computer.
 - Make sure that data is not being transmitted from the instrument. (Data is transmitted even when the notes on the keyboard are played or a Song is played back.)
- While the computer is connected to the instrument, you should wait for six seconds or more between these operations: (1) when turning the power of the instrument off then on again, or (2) when alternately connecting/disconnecting the USB cable.

If the computer or the instrument freezes, restart the application software or the computer OS, or turn the power to the instrument off then on again.

Connecting a Computer to the Instrument

■ System requirements and setup

Prepare the following items.

- A computer running Windows or macOS.
- A USB cable that satisfies the following conditions:
 - Less than 3 meters
 - Communication compliant with USB standards (not charging-only)
 - With plugs that match the terminal shapes of your computer and instrument
 - For a computer with the A type USB terminal: AB type cable
 - For a computer with the C type USB terminal: BC type cable

For MIDI Transfer

Standard drivers on either OS can be used; there is no need to install another driver.

For Audio Transfer

For Windows:

Download and install the Yamaha Steinberg USB Driver, available at the following URL:

<https://download.yamaha.com/>

- * After selecting your country and clicking on “Firmware/Software Updates” from the “Support” page, select the Product Category, and then enter “Yamaha Steinberg USB Driver” into the search box. From the search results click the appropriate driver.

For information on system requirements, refer to the page for downloading the driver.

Follow the Installation Guide in the package file to install the driver to the computer.

For Mac:

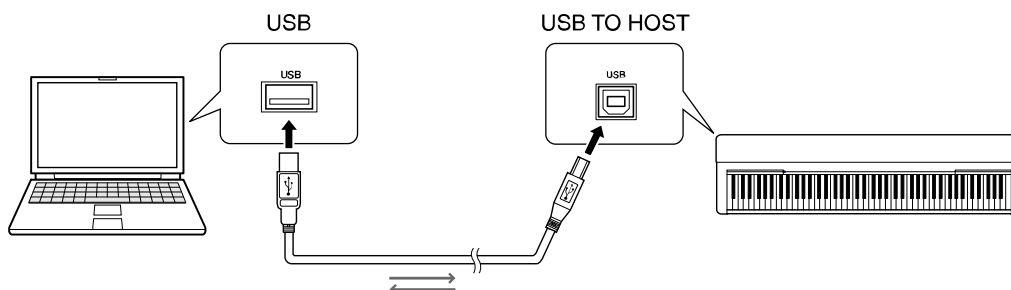
Standard driver on macOS can be used; there is no need to install another driver.

NOTE

- Not all models are equipped with audio playback functions; refer to the “USB Audio” column in the “[Target Models and Functions](#)” or the Owner’s Manual of your instrument for specific information.

■ Connection

1. Turn off the power of the instrument.
2. Start the computer, and then quit any running application software.
3. Connect the USB cable first to the USB TO HOST terminal of the instrument, and then to the USB terminal of the computer.



NOTE

- Use a USB cable with a plug that matches the terminal shape of your computer and instrument. For details, refer to "[System requirements and setup](#)" in "Connecting a Computer to the Instrument."

4. Turn on the power of the instrument.

The computer will automatically be set to enable MIDI communication with the instrument.

Playing Back Songs (MIDI, Audio) on a Computer with the Instrument

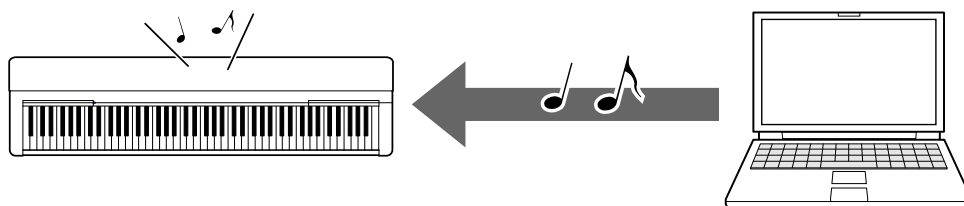
This section covers the basic procedure.

- 1.** Connect the instrument to a computer with a USB cable.
Refer to the "[Connecting a Computer to the Instrument.](#)"
- 2.** Start the file playback software/application on the computer.
For detailed instructions, refer to the manual of your particular playback software.
- 3.** Have a playback file ready on the computer.
 - MIDI files
 - Audio files
- 4.** From the playback software, select the connected instrument as the output destination.
- 5.** Start playback of the file on the playback software.

Song playback from the computer is output through the speakers of your instrument.

NOTE

- If the MIDI data includes any information for functions that are not supported by the instrument, the instrument will not play the data correctly.
- Not all models are equipped with audio playback functions; refer to the "USB Audio" column in the "[Target Models and Functions](#)" or the Owner's Manual of your instrument for specific information.



Recording Your Keyboard Performance as MIDI Data to a Computer

By using Music Production software on the computer, you can record your keyboard performance as MIDI data. For detailed instructions, refer to the manual of the application. This section covers the basic settings you need to make on the instrument for recording. Keep in mind that some of the following functions may not be available on the instrument.

● Local Control settings

When recording your keyboard performance to the connected computer, the MIDI data you play is transmitted to the computer and returned back to the instrument. This causes a “double” sound, since the tone generator of the instrument receives the keyboard performance data directly from the keyboard as well as the computer. To avoid this situation, set Local Control to “Off,” in order to separate the tone generator of the instrument from the keyboard.

NOTE

- When you use a software synthesizer as a tone generator, be sure to make settings on the computer application so that the MIDI data received from the instrument will not be returned back to the instrument, in addition to setting Local Control to “Off.”

● External Clock

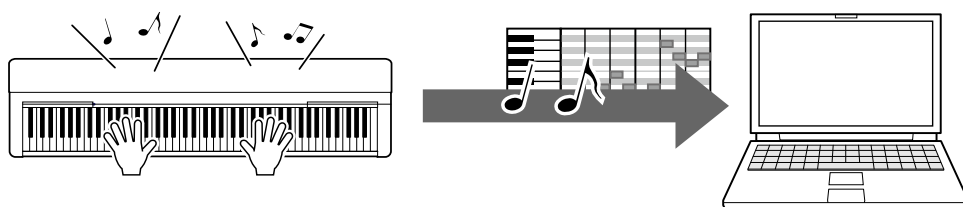
When playing back Style/Arpeggio data, you should set which clock is used, that of the instrument or the computer. If you use the clock of the computer, make settings on the instrument so that Style/Arpeggio playback follows the external clock.

● MIDI Transmit settings

Make settings so that Style/Arpeggio playback as well as the keyboard performance will be transmitted to the computer. Note that some instruments cannot transmit playback data.

● Transmitting the Panel Settings (Initial Send)

By executing this before recording, you can record the panel settings to the beginning of the Song data. This ensures that the proper and expected sounds will be produced when the recorded Song plays back.



Recording Your Keyboard Performance as Audio Data to a Computer

You can record your keyboard performance as audio data to a music production software on your computer. For more detailed instructions, refer to the Owner's Manual of your instrument.

If your computer's OS is Windows, you will need to install the Yamaha Steinberg USB Driver to your computer in order to properly transmit audio data. Refer to the "[Connecting a Computer to the Instrument](#)."

NOTE

- Not all models are equipped for recording audio data via USB cables. For specific information, refer to the "[Target Models and Functions](#)" or the Owner's Manual of your instrument.
- DAW stands for Digital Audio Workstation, which is application software that enables you to record, edit, and mix audio data. Some major DAW software include Cubase, Logic, SONAR and Digital Performer.

Transferring data files Including Song Files, Style Files and Backup Files

The following types of data can be transferred between the computer and instrument.

■ Data that can be transferred

Song files with the extension “.MID”

● External Song

This refers to Song data which is created on an external device other than your instrument (such as a computer). This refers also to Song data obtainable over the Internet.

● User Song

This refers to Song data which is created via the Recording function of the instrument. User Song data can be transferred to the computer as backup, and then returned to the instrument.

Style files with the extension “.STY”

● External Style

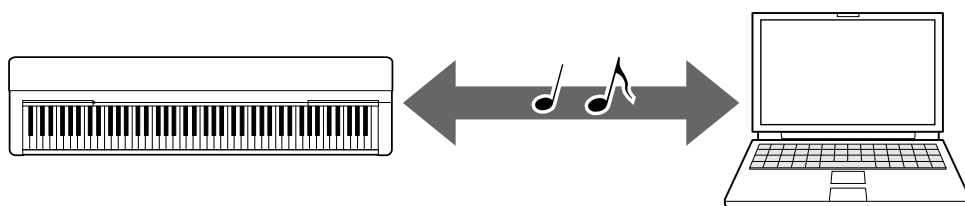
This refers to Style data which is created on an external device other than your instrument (such as a computer). This refers also to Style data obtainable over the Internet.

● User Style

This refers to Style data which is created via the Recording function of the instrument. User Style data can be transferred to the computer as backup, and then returned to the instrument.

Backup files with the extension “.BUP”

These files which include the panel settings and performance data can be transferred to the computer and saved as backup. The Backup files on the computer can be returned to the instrument again, allowing you to recall the panel settings and performance data you created previously.



The content of files that can be transferred differs depending on the instrument. The file transfer method is one of the following. (Some instruments may not be able to transfer files.)

- [Transferring files using Musicsoft Downloader \(free\)](#)
- [Transferring files with a Computer using Explorer, Finder, etc.](#)

For information on the types of files (data) that can be transferred and the file transfer method for each instrument, refer to “[Target Models and Functions](#)” or the Owner’s Manual of your instrument.

NOTICE

- If batteries can be installed to the instrument:
To avoid power down during file transfer and possible data loss, make sure to use the power adaptor rather than batteries when transferring files.

NOTE

- Make sure to stop playback of the Song or Style when using Musicsoft Downloader, since internal memory of the instrument cannot be accessed from the computer during playback.

Transferring files using Musicsoft Downloader

NOTE

- Certain instruments allow transferring and saving of files to your computer, such as user songs recorded on the instrument. For instruments that have files that can be transferred/saved, whether the file transfer is done using Music Software Downloader, or Explorer/Finder, etc. on the computer, depends on the particular instrument. For information on the types of files (data) that can be transferred and the file transfer method for each instrument, refer to "[Target models and Functions](#)" or the Owner's Manual of your instrument.

Installing Musicsoft Downloader

System Requirements

Check the following Yamaha downloads website.

Musicsoft Downloader is not supported for the Mac.

How to install

- 1.** On the computer, access the following site, and then download Musicsoft Downloader.

<https://download.yamaha.com/>

*After selecting your country and clicking on "Firmware/Software Updates" from the "Support" page, select the Product Category, and then enter "Musicsoft Downloader" into the search box.

Select "Musicsoft Downloader" from the search results. Information about the computer system requirements and the installing can be confirmed on the display shown.

- 2.** Execute installation by following the on-screen instructions.

After installation is completed, confirm that the Shortcut icon is located on the screen or Musicsoft Downloader is added under Yamaha in the Start menu.

For detailed instructions of this application, refer to the Help.

Transferring MIDI files from the Computer to the Instrument

NOTE

- Depending on the instrument and the computer OS used, menu and screen indications may differ from those shown in the instructions below.

1. Connect the instrument to a computer with a USB cable.
2. On the desktop of the computer, double-click the shortcut icon of Musicsoft Downloader.

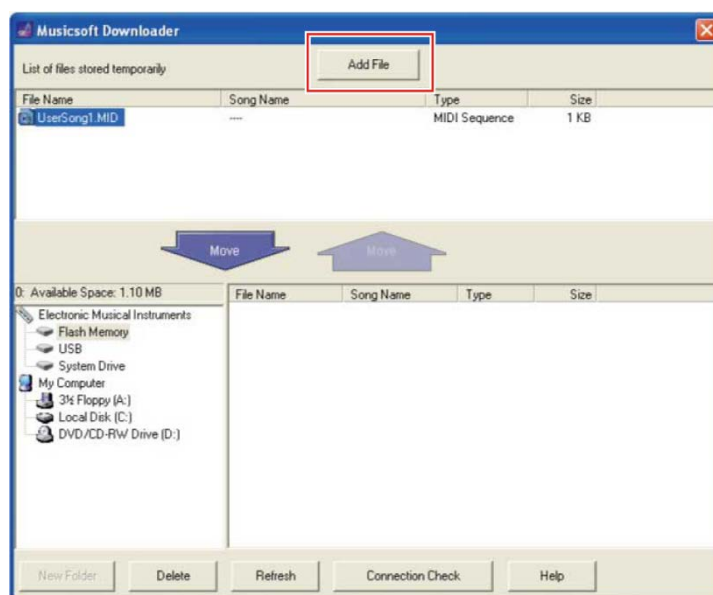
If you cannot find the shortcut icon, select [Start] → [All Programs] → [YAMAHA] → [Musicsoft Downloader] → [Musicsoft Downloader].

Musicsoft Downloader launches, and the main window appears.

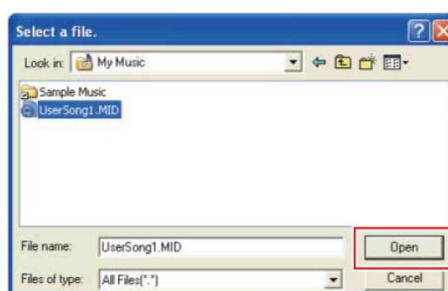
3. Click [Connection Check] at the bottom of the window.

This operation checks whether communication between the computer and instrument has been properly established or not. If an error message appears, follow the on-screen instructions to check the connection status with the Yamaha USB-MIDI driver.

4. Click [Add File] to call up the file selection window.



5. On the file selection window, select the desired file, then click [Open].



In the upper half box of the main window, the duplication of the selected file is shown.

6. At the lower left box of the main window, click “Electronic Musical Instruments,” and then select the desired destination drive.

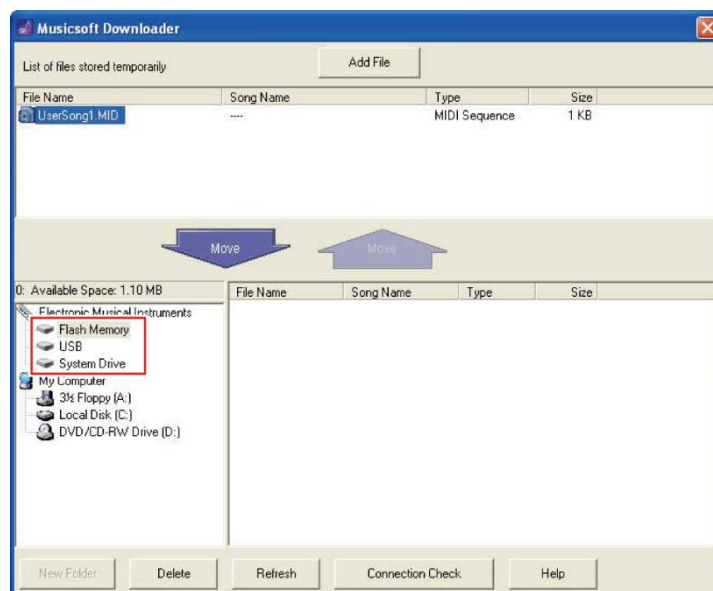
- If you wish to transfer Song (***.MID) or Style (***.STY) data to internal memory of the instrument, select “Flash Memory.”
- If you wish to transfer Song (***.MID) or Style (***.STY) data to the USB flash drive connected to the USB TO DEVICE terminal of the instrument, select “USB.”
- If you wish to transfer Backup file (****.BUP) data, select “System Drive.”

NOTE

- When a “USER FILES” folder is located under “Flash Memory” or “USB”:
For User Songs, select the “USER FILES” folder. Song files outside the “USER FILES” folder will be handled as External Songs.
For External Songs, select a folder other than the “USER FILES” folder, or simply specify “Flash Memory” or “USB” (the area first displayed when clicking “Flash Memory” or “USB”). If you select the “USER FILES” folder for External Songs, they will not be played back on the instrument.

IMPORTANT

- Regarding Backup files, User Songs and User Styles created on the instrument, never change the file name on the computer. Doing so makes it impossible to transfer the Backup file to the instrument and prevents User Song and User Style data from being recognized by the instrument.



7. Select the file in the upper half box, then click the downward [Move ↓] button.

A confirmation message will appear. To cancel the operation, click [CANCEL] in this step.

8. Click [OK] to start data transfer from the computer to the instrument.

NOTICE

- Never unplug the USB cable during data transfer. Not only will the data transfer fail, but also operation of the memory media may become unstable and its contents may disappear completely when the power is turned on or off.

9. After data transfer is completed, close the window to quit the Musicsoft Downloader.

10. On the instrument, use the data to play music.

If you've transferred a Backup file (****.BUP), confirm that the panel settings have been changed as expected.

If you've transferred a Song (***.MID), select the corresponding number and then start playback. For details, refer to the Owner's Manual of your instrument, or refer to the ["Playing Back MIDI Files including Songs Transferred from a Computer."](#)

If you've transferred a Style (***.STY), confirm that the file transfer was successful according to the Owner's Manual of your instrument.

NOTE

- Note that the instrument cannot be operated while Musicsoft Downloader is running.

Transferring Song/Style data from the Instrument to the Computer

NOTE

- Depending on the instrument and the computer OS used, menu and screen indications may differ from those shown in the instructions below.

1. Connect the instrument to a computer with a USB cable.

2. From Desktop (on the computer), double-click the shortcut icon of Musicsoft Downloader.

If you cannot find the shortcut icon, select [Start] → [All Programs] → [YAMAHA] → [Musicsoft Downloader] → [Musicsoft Downloader].

Musicsoft Downloader launches, and the main window appears.

3. Click [Connection Check] at the bottom of the window.

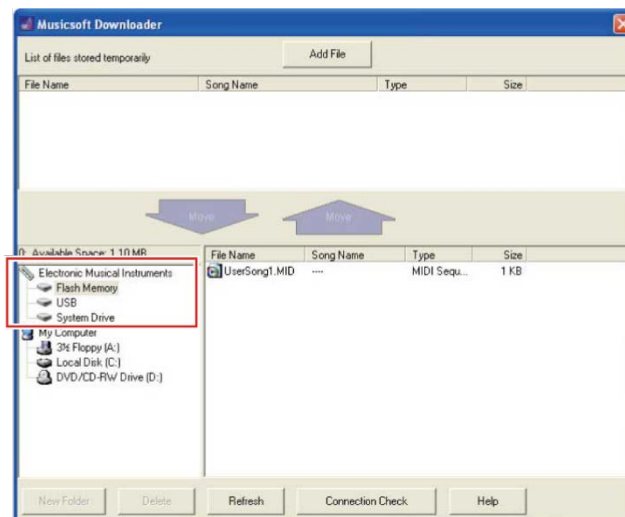
This operation checks whether communication between the computer and instrument has been properly established or not. If an error message appears, follow the on-screen instructions to check the connection status with the Yamaha USB-MIDI driver.

4. At the lower left box of the main window, click "Electronic Musical Instruments," and then select the desired source drive.

- If you wish to transfer Song (***.MID) or Style (***.STY) data in internal memory of the instrument, select "Flash Memory."
- If you wish to transfer Song (***.MID) or Style (***.STY) data in the USB flash drive

connected to the USB TO DEVICE terminal of the instrument, select "USB."

- If you wish to transfer Backup file (****.BUP) data, select "System Drive."



- 5.** In the lower right box of the window, select the desired file, and then click the upward [Move] button.

A confirmation message will appear. To cancel the operation, click [CANCEL] in this step.

- 6.** Click [OK] to start data transfer from the instrument to the computer's temporary storage area.

- 7.** After a while, confirm that the transferred data appears in the box on the upper half of the window.

- 8.** In the lower left box, select the desired destination folder, then click the upward [Move ↑] button.

A confirmation message will appear. To cancel the operation, click [CANCEL] in this step.

- 9.** Click [OK] to start data transfer from the temporary storage area to the specified destination folder of the computer.

NOTICE

- Never unplug the USB cable during data transfer. Not only will the data transfer fail, but also operation of the memory media may become unstable and its contents may disappear completely when the power is turned on or off.

- 10.** After data transfer is completed, confirm that the file is located in the specified folder of the computer.

- 11.** Quit Musicsoft Downloader.

Transferring files with a Computer using Explorer, Finder, etc.

NOTE

- Depending on the instrument and the computer OS used, menu and screen indications may differ from those shown in the instructions below.
- Certain instruments allow transferring and saving of files to your computer, such as user songs recorded on the instrument. For instruments that have files that can be transferred/saved, whether the file transfer is done using Music Software Downloader, or Explorer/Finder, etc. on the computer, depends on the particular instrument. For information on the types of files (data) that can be transferred and the file transfer method for each instrument, refer to "[Target model and Functions](#)." or the Owner's Manual of your instrument.

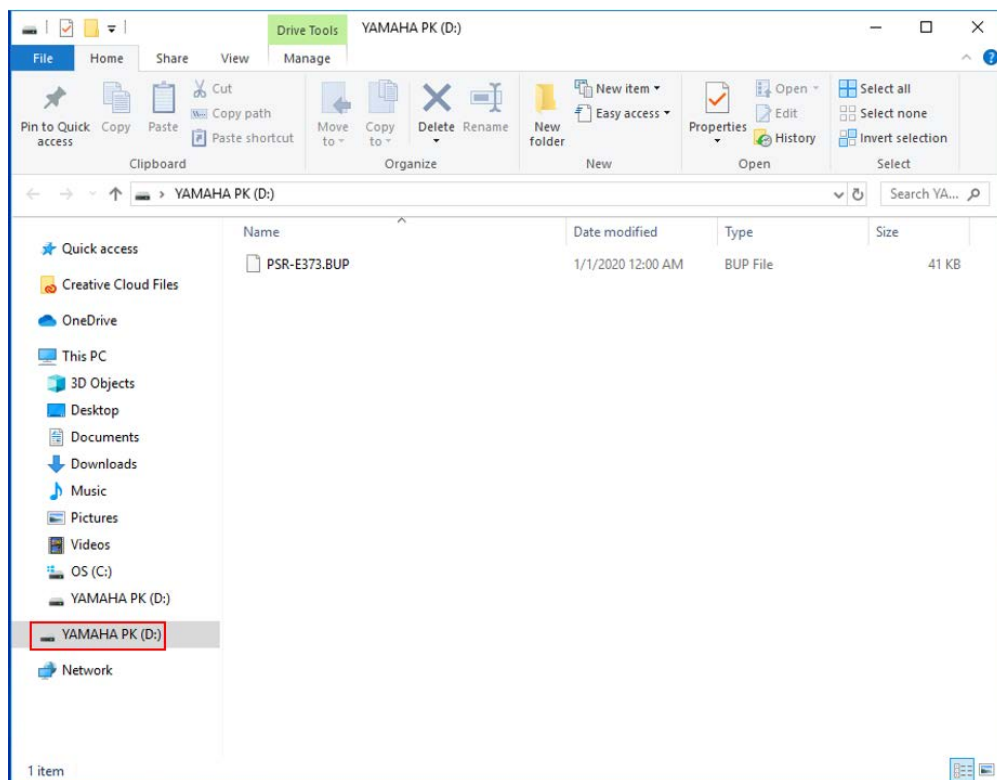
Windows 10 is used as an example in this manual.

- 1.** Connect the instrument and the computer via a USB cable.
- 2.** Set the instrument's function "Storage Mode" to "ON" according to the Owner's Manual of your instrument.

NOTE

- The instrument is locked or cannot be used while "Storage Mode" is set to "ON." "Storage Mode" should be set to "OFF" normally, except when you transfer the file between the instrument and the computer.

- 3.** On the computer, start an application that can copy files, such as Explorer.
- 4.** Confirm that the instrument is recognized as an external storage device using Explorer or a similar program.
 - The device name depends on the instrument.



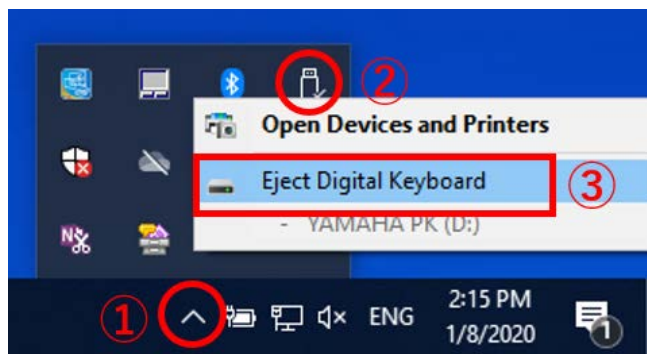
5. Copy files between the computer and the instrument (external storage device).

NOTICE

- When copying files from the computer to the instrument (external storage drive), make sure that the instrument (external storage drive) has enough free space.
- Do not change (rename) the backup file name (with the extension:.BUP) on the computer. The backup data will not be imported to the instrument.
- Regarding User Songs and User Styles created on the instrument, never change the file name on the computer. Doing so prevents User Song and User Style data from being recognized by the instrument.
- Do not create folders on the instrument (external storage drive). The instrument may not correctly recognize the copied file.
- Do not format the instrument (external storage drive). The instrument may not work properly.
- Do not disconnect the USB cable during data communication. Also, do not turn off the power of the instrument. Not only will the data being transferred not be saved, but the instrument and computer will become unstable, and all memory contents may be lost when the power is turned on or off.
- To remove the instrument (external storage drive), follow the procedures in this booklet. Failing to do this may result in damage to the file.

6. After copying is completed, remove the instrument (external storage drive) from the computer.

- The drive name depends on the instrument.



- 7.** Disconnect the USB cable connecting the instrument to the computer.
- 8.** Set the instrument's function "Storage Mode" to "OFF" according to the Owner's Manual of your instrument.
- 9.** If you transferred the file to the instrument, make sure that it was transferred correctly.
 - If you've transferred a Backup file (****.BUP), confirm that the panel settings have been changed as expected.
 - If you've transferred a Song (***.MID), select the corresponding number and then start playback. For details, refer to the Owner's Manual of your instrument, or refer to the ["Playing Back MIDI Files including Songs Transferred from a Computer."](#)
 - If you've transferred a Style (***.STY), confirm that the file transfer is successful according to the Owner's Manual of your instrument.

Playing Back MIDI Files including Songs Transferred from a Computer

For instruments other than the models listed below, refer to the Owner's Manual of your instrument to see how to play files transferred from a computer. (This function may not be available on certain models.)

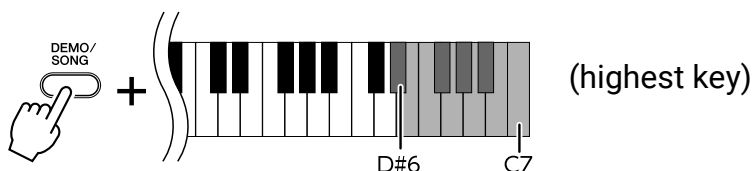
YDP-C71/YDP-S52/YDP-S51/YDP-S34/YDP-163/YDP-162/YDP-143/YDP-142/CLP-725/CLP-625/CLP-525/YDP-164/YDP-144/YDP-S54

You can transfer up to 10 Song files from a computer to this instrument for playback. The transferred Songs are assigned to the D#6–C7 keys, letting you select and play them back.

NOTE

- The shapes of buttons may appear different from those on your instrument.
- For the functions assigned to the keys, refer to the Quick Operation Guide supplied with your instrument.

- 1.** While holding down [DEMO/SONG], press one of the D#6–C7 keys to select a song to play back.



● YDP-C71

Playback continues the sequence: any other Songs transferred from the computer, followed by Demo Songs and Preset Songs.

● YDP-S52/YDP-S51/YDP-S34/YDP-163/YDP-162/YDP-143/YDP-142/CLP-725/CLP-625/CLP-525/YDP-164/YDP-144/YDP-S54

Playback continues the sequence: any other Songs transferred from the computer.

To change the Song during playback:

Press [+ R] or [- L] to change to the next or previous Song.

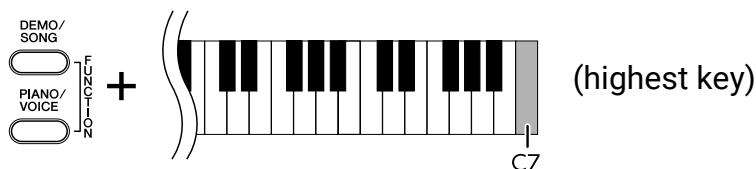
- 2.** Press [DEMO/SONG] or [PLAY] to stop playback.

■ Changing Playback Channels

Try this operation when Song playback produces an unexpected or unnatural sound.

To set Playback Channels to "1+2":

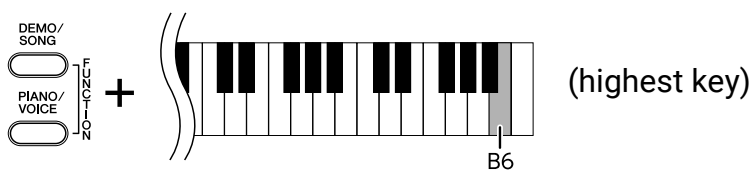
While holding down [DEMO/SONG] and [PIANO/VOICE] simultaneously, press the C7 key.



With this operation, the Song data of only channels 1 and 2 will be played back. When Voices incompatible with this instrument are assigned to Channels 3 – 16 and the Piano parts are assigned to the Channels 1 and 2, this operation results in the proper or expected sound.

To set Playback Channels to "All":

While holding down [DEMO/SONG] and the [PIANO/VOICE] simultaneously, press the B6 key.



With this operation, the Song data of all channels will be played back.

Target Models and Functions

If the model name of your instrument is not listed below, refer to the Owner's Manual of your instrument to check its functions.

*1	File Transfer method*2	-----Data formats compatible for transfer-----					USB Audio
		User Song	User Style	Backup File	External Song*3	External Style	
CLP-525	MSD	✓	–	–	✓	–	–
CLP-585/575/ 545/535/ 565GP	MSD	✓	–	–	✓	–	–
CLP-625	MSD	✓	–	–	✓	–	–
CLP-685/675/ 645/635/ 665GP	MSD	✓	–	–	✓	–	✓ *4
CLP-695GP	MSD	✓	–	–	✓	–	✓
CLP-725	MSD	✓	–	–	✓	–	✓
CLP-785/775/ 745/735/ 795GP/ 765GP	MSD	✓	–	–	✓	–	✓
CSP-170/150	–	–	–	–	–	–	✓
CSP-295/275/ 255/295GP	–	–	–	–	–	–	✓
CVP-609/605/ 601	MSD	✓	✓	"Model Name".BUP	✓	✓	–
CVP-709/705/ 701	MSD	✓	✓	"Model Name".BUP	✓	✓	–
CVP-809/805	MSD	✓	✓	"Model Name".BUP	✓	✓	✓

*1	File Transfer method*2	-----Data formats compatible for transfer-----					USB Audio
		User Song	User Style	Backup File	External Song*3	External Style	
CVP-909/905	–	–	–	–	–	–	✓
EZ-300	Explorer	–	–	EZ-300.BUP	✓	✓	✓
F02	MSD	✓	–	–	–	–	–
KB-209/208	MSD	–	–	KB-208.BUP	✓	✓	✓
KB-309/308	MSD	–	–	KB-308.BUP	✓	✓	✓
KBP-1100/2100	MSD	✓	–	“Model Name”.BUP	✓	✓	–
N1X	MSD	✓	–	–	✓	–	✓
N3X	MSD	✓	–	–	✓	–	–
NP-32/12	–	–	–	–	–	–	–
NP-35/15	–	–	–	–	–	–	✓
NU1	MSD	✓	–	–	✓	–	–
NU1X	MSD	✓	–	–	✓	–	✓ *4
NU1XA	–	–	–	–	–	–	✓
P-115/105	MSD	✓	–	–	✓	–	–

*1	File Transfer method*2	-----Data formats compatible for transfer-----					USB Audio
		User Song	User Style	Backup File	External Song*3	External Style	
P-125/121	MSD	✓	–	–	✓	–	✓
P-125a	MSD	✓	–	–	✓	–	–
P-145/143/ 145BT/143BT	–	–	–	–	–	–	✓
P-225/223	–	–	–	–	–	–	✓
P-255	MSD	✓	–	–	✓	–	–
P-45	–	–	–	–	–	–	–
P-515	MSD	✓	–	–	✓	–	✓
P-S500	–	–	–	–	–	–	✓
PSR-E243/YPT-240	–	–	–	–	–	–	–
PSR-E343/YPT-340	MSD	–	–	PSR-E343.BUP	✓	✓	–
PSR-E353	MSD	–	–	PSR-E353.BUP	✓	✓	–
PSR-E363/YPT-360	MSD	–	–	PSR-E363.BUP	✓	✓	✓
PSR-E373/YPT-370	Explorer	–	–	PSR-E373.BUP	✓	✓	✓
PSR-E433	MSD	–	–	PSR-E433.BUP	✓	✓	–

*1	File Transfer method*2	-----Data formats compatible for transfer-----					USB Audio
		User Song	User Style	Backup File	External Song*3	External Style	
PSR-E443	MSD	–	–	PSR-E443.BUP	✓	✓	–
PSR-E453	MSD	–	–	PSR-E453.BUP	✓	✓	✓
PSR-E463	MSD	–	–	PSR-E463.BUP	✓	✓	✓
PSR-E473	Explorer	–	–	PSR-E473.BUP	✓	✓	✓
PSR-EW300	MSD	–	–	PSREW300.BUP	✓	✓	✓
PSR-EW310	Explorer	–	–	PSREW310.BUP	✓	✓	✓
PSR-EW400	MSD	–	–	PSREW400.BUP	✓	✓	✓
PSR-EW410	MSD	–	–	PSREW410.BUP	✓	✓	✓
PSR-EW425	Explorer	–	–	PSREW425.BUP	✓	✓	✓
PSR-I300	Explorer	–	–	✓	✓	✓	✓
PSR-I400	MSD	–	–	PSR-I400.BUP	✓	✓	–
PSR-I455	MSD	–	–	PSR-I455.BUP	✓	✓	–
PSR-I500	MSD	–	–	PSR-I500.BUP	✓	✓	✓
PSR-S670	MSD	✓	✓	PSR-S670.BUP	✓	✓	–

*1	File Transfer method*2	-----Data formats compatible for transfer-----					USB Audio
		User Song	User Style	Backup File	External Song*3	External Style	
PSR-S750	MSD	✓	✓	PSR-S750.BUP	✓	✓	—
PSR-S950	MSD	✓	✓	PSR-S950.BUP	✓	✓	—
PSR-S970/S770	MSD	✓	✓	"Model Name".BUP	✓	✓	—
PSR-S975/S775	MSD	✓	✓	"Model Name".BUP	✓	✓	—
YDP-162/142	MSD	✓	—	—	✓	—	—
YDP-163/143	MSD	✓	—	—	✓	—	—
YDP-164/144	MSD	✓	—	—	✓	—	✓
YDP-165/145	—	—	—	—	—	—	✓
YDP-C71	MSD	✓	—	YDP-C71.BUP	✓	—	—
YDP-S34	MSD	✓	—	—	✓	—	✓
YDP-S35	—	—	—	—	—	—	✓
YDP-S52/S51	MSD	✓	—	—	✓	—	—
YDP-S54	MSD	✓	—	—	✓	—	✓
YDP-S55	—	—	—	—	—	—	✓

*1 Models not sold in some regions are also listed.

*2 "Explorer" is entered for models that can transfer files using Explorer, Finder, etc. attached to the computer, and "MSD" is entered for models that cannot. For models with "MSD", transfer the files with [Musicsoft Downloader](#).

*3 SMF Formats 0 & 1

*4 Available on instrument firmware version 2.00 or later.

■ About this manual

- The illustrations as shown in this manual are for instructional purposes only, and may appear somewhat different from those on your instrument.
- Windows is a registered trademark of Microsoft(R) Corporation in the United States and other countries.
- Mac and macOS are trademarks of Apple Inc., registered in the U.S. and other countries.
- The company names and product names in this manual are the trademarks or registered trademarks of their respective companies.

© 2020 Yamaha Corporation
Published 04/2025 YJ-X0